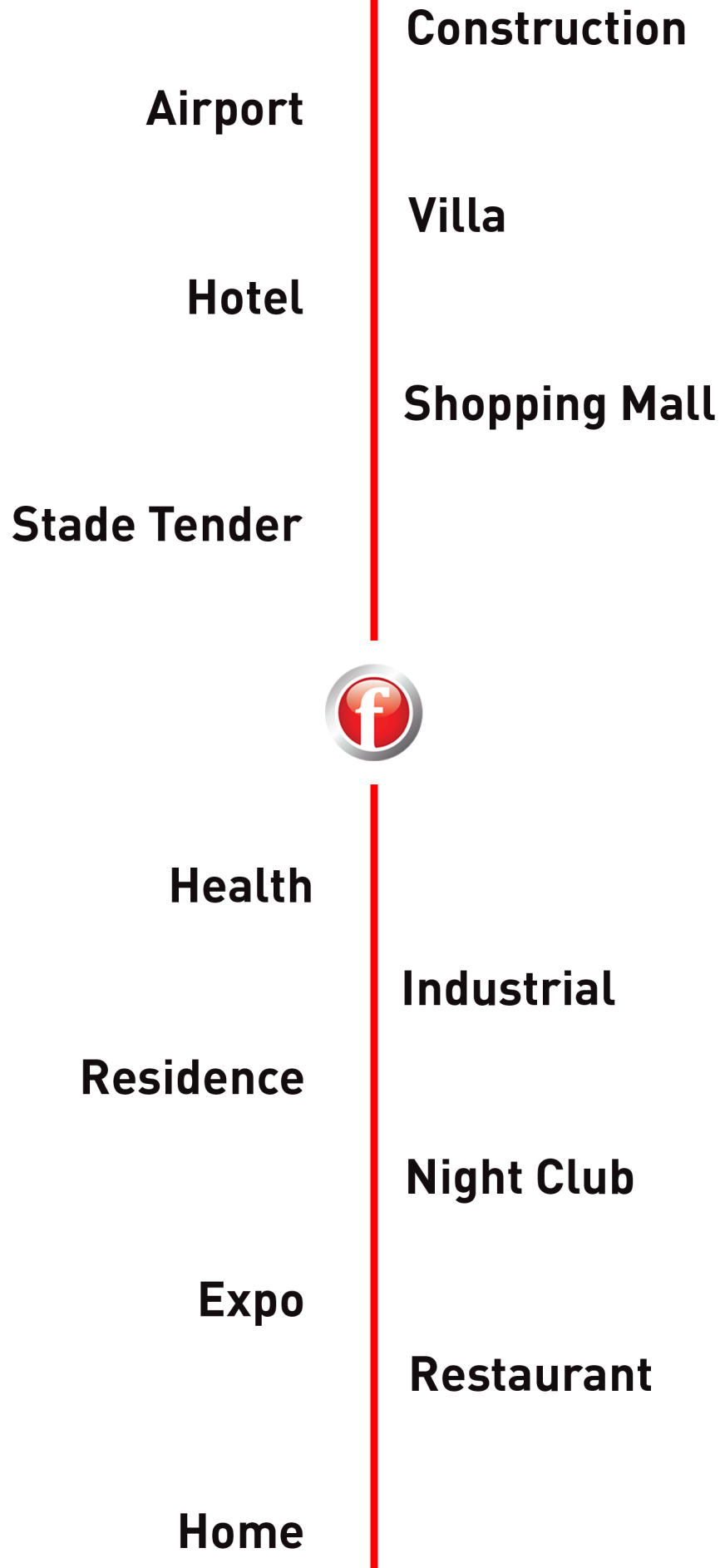




**EI 2<sup>90</sup>**











## **SERTİFİKALAR**





T.C.  
TÜRK PATENT ENSTİTÜSÜ

# MARKA YENİLEME BELGESİ

Marka No : 2004 46474 - Ticaret

## FALEZ

Marka Sahibi : **BAKIRCILAR ÇELİK KAPI ALÜMİNYUM MOBİLYA  
MADENCİLİK MERMER İNŞAAT TİCARET VE SANAYİ  
LİMİTED ŞİRKETİ  
TÜRKİYE CUMHURİYETİ  
Döşemealtı Odabaşı Köyü ANTALYA**

Emtiası : 06 , 20  
İlişiktir.

İş bu Marka ilk defa 31/03/2004 tarihinde tescil edilmiş  
olup, 556 Sayılı Markaların Korunması Hakkında Kanun Hükmünde  
Kararnamenin 40. Maddesi gereğince 31/03/2014 tarihinden itibaren  
ON YIL süreyle yenilenmiştir.



**Elif B. AKIN**  
Enstitü Başkanı a.  
Markalar Dairesi Başkanı  
Hürryet ÖZDEMİR  
Şube Müdürü

TÜRK PATENT [●] ENSTİTÜSÜ



T.C.  
TÜRK PATENT ENSTİTÜSÜ

## MARKA TESCİL BELGESİ

Marka No : 2013 37789 - Ticaret



Marka Sahibi : BAKIRCILAR ÇELİK KAPI ALÜMİNYUM  
MOBİLYA MADENCİLİK MERMER İNŞAAT  
TİCARET VE SANAYİ LİMİTED ŞİRKETİ  
TÜRKİYE CUMHURİYETİ  
Döşemealtı Odabaşı Köyü ANTALYA  
Emtiası : 06  
İlişiktir.

Markaların Korunması Hakkında 556 Sayılı Kanun Hükmünde  
Kararnameye göre 24/04/2013 tarihinden itibaren ON YIL müddetle  
04/06/2014 tarihinde tescil edilmiştir.



Elif B. AKIN  
Enstitü Başkanı a.  
Markalar Dairesi Başkanı

TÜRK PATENT [●] ENSTİTÜSÜ



**TEKNİK KONTROL  
VE BELGELENDİRME LTD. ŞTİ.**

**BAKIRCILAR ÇELİK KAPI ALÜ. MOB. MAD. MER.  
İNŞ. TİC. VE SAN. LTD. ŞTİ.**

ODABAŞI MH. 9681 SK. N:11 KEPEZ /ANTALYA

Yukarıda adı geçen kuruluşun, KBM Belgelendirme Prosedürüne göre Standardın şartlarını aşağıdaki kapsamda karşıladığı kanıtlanmıştır.

Kapsam  
**ÇELİK KAPI İMALATI VE SATIŞI**

**ISO 9001:2015**

Sertifika No	Tescil Tarihi	27/08/2019
Yeniden Basım T. 07/09/2020	Bitiş Tarihi	26/08/2021
Geçerlilik Periyodu 3 Yıl		



TÜRKAK BDS NO  
YS-3FE8-830D

*Handwritten signature*



KBM Teknik Kontrol ve Belgelendirme Ltd. Şti.  
Talatpaşa Mah. Pazar Yolu Cad. Sedai Plaza No:2 K:2 D:27 Pk: 34513 Esenyurt-İstanbul / TÜRKİYE  
Bu sertifika KBM sözleşme şartlarına uyulduğu sürece sertifika numarası ile güncelliği web adresinden takip edilebilir.  
Tel. +90 212 853 83 43 (Pbx) Faks. +90 212 853 65 38 info@kbm.com.tr - www.kbm.com.tr





# SERTİFİKA

**BAKIRCILAR ÇELİK KAPI ALÜ. MOB.  
MAD.MER. İNŞ. TİC VE SAN. LTD.ŞTİ.**

ODABAŞI MAH.9681 SK. NO:11 KEPEZ ANTALYA

## ISO 10002:2018

ÇELİK KAPI İMALATI VE SATIŞI

Bu belge ile sertifika sahibinin yukarıda belirtilen adreste lisans sözleşmesi koşullarına ve gerekliliklerine uygun olarak TRB Belgelendirme Kuruluşu tarafından değerlendirildiği ve ilgili şirketin uyguladığı yukarıda adı geçen yönetim sistemi şartlarının sağlandığı tescil edilmiştir. Ayrıca bu sertifika, kuruluş'un TRB Belgelendirme'nin kurallarına uyduğu ve "www.trb.com.de" sertifika sorgulama kısmında aktif görüldüğü sürece geçerlidir.

Sertifika No : DE-CS-1165  
Tescil Tarihi : 29.08.2019  
Geçerlilik Tarihi : 28.08.2021  
Sertifika Dönemi : 3 Yıl(2.Yıl)  
Baskı No : 01



*[Signature]*  
Genel Müdür

Pfannestiel 17, 88677 Markdorf-Deutschland  
Telefon: 0049-7544-9870020 Fax: 0049-7544-72190 web: [www.trb.com.de](http://www.trb.com.de) E-mail: [info@trb.com.de](mailto:info@trb.com.de)

# TÜRK STANDARDLARI ENSTİTÜSÜ



## HİZMET YETERLİLİK BELGESİ

**Belge No** :07-HYB-338  
**İlk Veriliş Tarihi** :2.10.2005  
**Son Geçerlilik Tarihi** :3.10.2021  
**Firmanın Adı** :BAKIRCILAR ÇELİK KAPI ALÜMİNYUM MOBİLYA MADENCİLİK MERMER İNŞAAT TİC. VE SAN. LTD.ŞTİ.  
**Firmanın Adresi** :ODABAŞI MAHALLESİ 9681 SOKAK NO:11 KEPEZ ANTALYA/TÜRKİYE  
**Hizmet Yeri Adresi** :DÖŞEMEALTI-ODABAŞI KÖYÜ ANTALYA/TÜRKİYE  
**Sicil No** :41796

### Verilen Hizmetin Kapsamı

1. TS 12558 (09.01.2017) YETKİLİ SERVİSLER – KAPI PENCERE VE BARIYER SİSTEMLERİ – KURALLAR STANDARDINA UYGUN HİZMET VEREN İŞ YERİ

\* BAKIRCILAR ÇELİK KAPI ALÜMİNYUM MOBİLYA MADENCİLİK MERMER İNŞAAT TİC. VE SAN. LTD.ŞTİ. YETKİLİ SERVİSİ (729868)  
(FALEZ) MARKALI



Türk Standardları Enstitüsü Hizmet Belgelendirme Yönergesine göre yapılan inceleme neticesinde; firma işyerinin, kapsamında belirtilen, hizmetler için yeterli olduğu tespit edilerek bu belge verilmiştir.

e-imzalı/e-signed

23.10.2020

NECİP FAZİL ÖĞÜT

ANTALYA BELGELENDİRME MÜDÜRÜ V.



Gençlik Mah. Işıklar Cad. Falez Apt. No: 59 ANTALYA Telefon: 0242-346 65 03 / 334 01 17 Faks: 0242-248 50 06

Bu belge hiçbir suretle tahrif edilemez, kısmen veya okunmasını zorlaştıracak şekilde çoğaltılamaz, kopyası ve silinti yapılamaz. Sayfa : 1 / 1

<https://evrakkontrol.tse.org.tr/BelgeGorulama.aspx?p=sjvqlv5> adresinden belgenin doğruluğunu ve geçerliliğini sorgulayınız.

Firmaya ait diğer şube bilgilerini <https://basvuruportal.tse.org.tr/Genel/FirmaArama.aspx> adresinden sorgulayabilirsiniz





**TS EN 13501-2:2016'YA GÖRE YANGIN DAYANIM**  
**PERFORMANS SINIFLANDIRMA RAPORU**

<b>Testi yaptıran</b>	: BAKIRCILAR ÇELİK KAPI ALUM. MOB. MAD. MER. İNŞ. TİC. VE SAN. LTD. ŞTİ. Odabaşı Mahallesi 9681 Sk. No:11 Kepez, ANTALYA/TÜRKİYE
<b>Hazırlayan</b>	: EFFECTIS ERA AVRASYA Test ve Belgelendirme A.Ş. Dilovası OSB 5. Kısım Fırat Cad. No: 18 41455 Dilovası, KOCAELİ/TÜRKİYE
<b>Ürün adı</b>	: Tek kanat çelik yangın kapıları "FLZYKB001, MONOBLOK_01.001"
<b>Sınıflandırma rapor no.</b>	: EEA – 17 – 073 – REV
<b>Yayın numarası</b>	: 1/2
<b>Yayınlanma tarihi</b>	: 20.08.2020

**Bu sınıflandırma raporu, bir önceki versiyonundaki çalışma yönü ile alakalı düzeltme sebebi ile "EEA-17-073" numaralı sınıflandırma raporun yerini almıştır. Bu sınıflandırma raporu 21 sayfadan oluşmaktadır ve sadece bütünüyle kullanılabilir ya da çoğaltılabilir.**

## 1. INTRODUCTION

This classification report defines the classification in accordance with the procedures given in EN 13501-2:2016, assigned to *Single Leaf Steel Fire Doors* "**FLZYKB001, MONOBLOK\_01.001**".

## 2. DETAILS OF CLASSIFIED PRODUCT

### 2.1. General:

The elements, *Single Leaf Steel Fire Doors* "**FLZYKB001, MONOBLOK\_01.001**", are defined as a type of products.

### 2.2. Description:

*Single Leaf Steel Fire Doors* "**FLZYKB001, MONOBLOK\_01.001**" are fully described below.

#### 2.2.1. General

Product identification : *Single Leaf Steel Fire Doors* "**FLZYKB001, MONOBLOK\_01.001**"

FLZYKB001 : Door Nr.1  
MONOBLOK\_01.001 : Door Nr.2

Direction of fire : Hinges away from fire

Manufacturer : BAKIRCILAR ÇELİK KAPI ALUM. MOB. MAD. MER. İNŞ. TİC. VE SAN. LTD.ŞTİ.  
Odabaşı Mahallesi 9681 Sk. No: 11 Kepez, ANTALYA/TURKEY

Sponsor of test : BAKIRCILAR ÇELİK KAPI ALUM. MOB. MAD. MER. İNŞ. TİC. VE SAN. LTD.ŞTİ.  
Odabaşı Mahallesi 9681 Sk. No: 11 Kepez, ANTALYA/TURKEY

#### 2.2.2. Construction

Single action steel door constructions, *Single Leaf Steel Fire Doors* "**FLZYKB001, MONOBLOK\_01.001**" were mounted in a masonry supporting construction, made of aerated concrete blocks with the mounting clearances dimensions of 950 X 2050 mm (w x h) for both door.

The supporting construction was supplied by the test laboratory (Efectis Era Avrasya) and consisted of aerated concrete blocks which have a density of 650 kg/m<sup>3</sup> and thickness of 200 mm.

#### 2.2.3. Components

##### 2.2.3.1. Door Nr.1:

##### 2.2.3.1.1. Door Frame:

The frame studs and header were welded to each other and fixed to the supporting construction with steel screws. Stone wool was used between the supporting construction and the frame. Heat resistance silicone was used at contact point of the supporting construction and the frame. Intumescent seal strip was used at contact point of the leaf and the frame. Smoke seal was used rebated edges of the frame.





## 4.2. Classification

Single Leaf Steel Fire Doors "MFD-90, MFD-60" are classified according to the following combinations of performance parameters and classes:

FIRE RESISTANCE CLASSIFICATION	
Direction of fire: Opening away from the fire	
Category A	Category B
(Door Nr.1) <b>FLZYKB001:</b> <b>E90, EI<sub>2</sub>90, EI<sub>1</sub>20</b>	(Door Nr.1) <b>FLZYKB001:</b> <b>E90, EI<sub>2</sub>90, EI<sub>1</sub>20</b>
Direction of fire: Opening towards the fire	
Category A	Category B
(Door Nr.1) <b>FLZYKB001:</b> <b>E90</b>	(Door Nr.1) <b>FLZYKB001:</b> <b>E90</b>

## 4.3. Field of application

### 4.3.1 General

This report details the method of construction, the test conditions and the results obtained when the specific elements of construction described herein was tested following the procedure outlined in EN 1363-1:2012, and when appropriate EN 1363-2:1999. Any significant deviation with respect to size, constructional details, load stresses, edge or end conditions other than those allowed under the field of direct application in the relevant test method is not covered by this report

Except if otherwise specified hereafter, the design of the door-unit shall be identical to that of the test specimen. It is not allowed to modify the number of door leaves and the operating mode (e.g. swing door or pivoted door, single or double acting door).

### 4.3.2 Specific Restrictions Concerning Materials And Structures

#### 4.3.2.1 Metal structures

It is allowed to increase the steel envelope around the fixed frames in order to allow for thicker supporting structures. It is allowed to increase the steel thickness by 25 % maximum.

It is not allowed to change type of the metal.

The number of stiffening elements for doors without thermal insulation and the number and the type of their attachments in the panel manufacture may be increased in proportion to the increase of the dimensions, but it is not allowed to be reduced.



## Drawings:

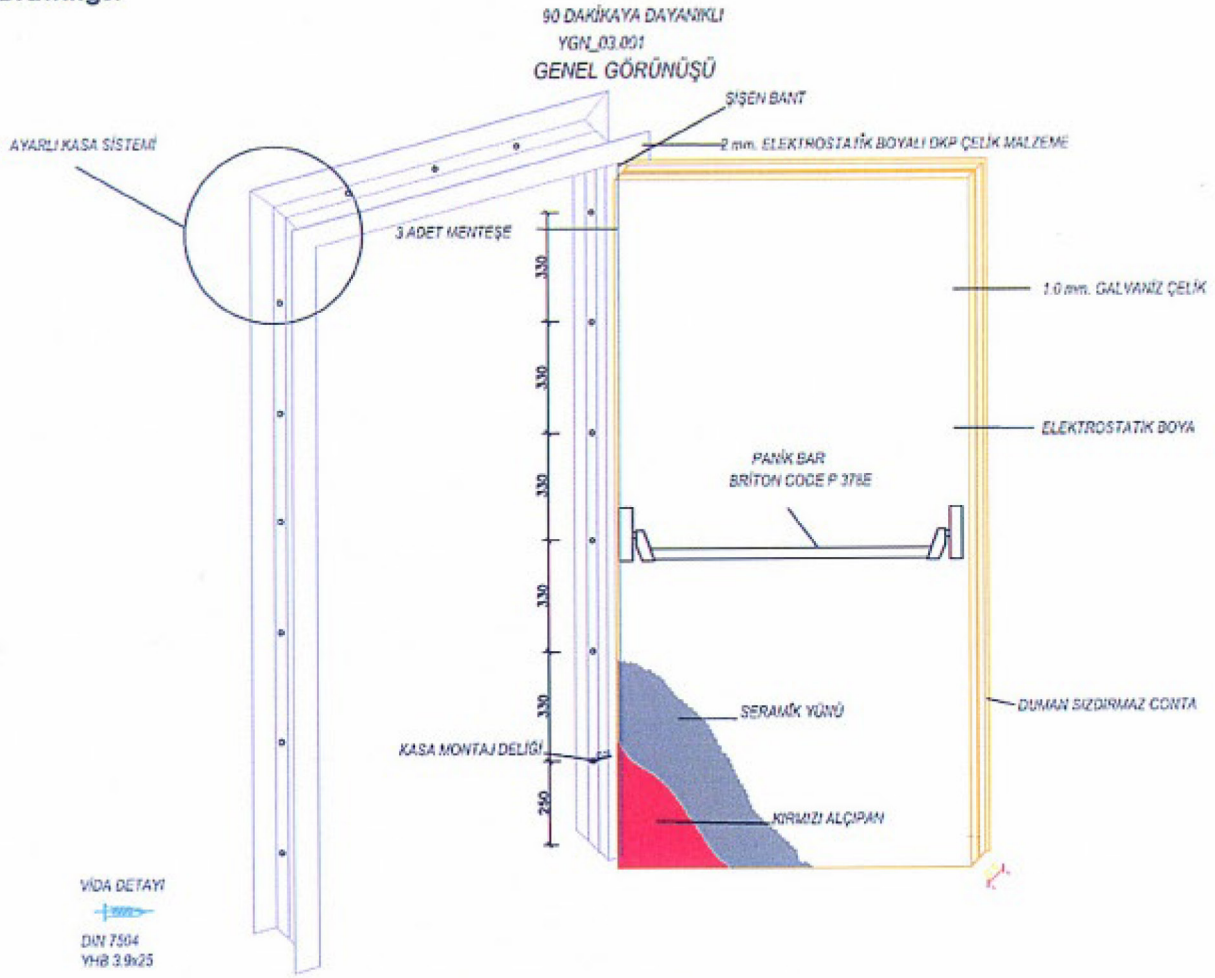


Figure 1: Hardware view of the Door Nr. 1.

Handwritten signature in blue ink.



#### 4.3.2.2 Decorative coatings

##### 4.3.2.2.1 Paint

Electrostatic powder painting is allowed for the surfaces of the door frames. Any painting is not allowed on the hardware components and on the surfaces of door leaves.

##### 4.3.2.2.2 Decorative laminates

Decorative laminates and timber veneers up to 1,5 mm thickness are allowed to be added to the faces (but not the edges) of leaves and frames in door-sets which satisfy the insulation criteria (Allowed for only: Door Nr.1: EI<sub>1</sub>20, EI<sub>2</sub>90;)

#### 4.3.2.3 Fixings

It is permitted to increase the number of fasteners used to attach the fire resistant doors onto the supporting structures but it is not allowed to be reduced, and it is allowed to reduce the distance between the fasteners but it is not allowed to be increased.

#### 4.3.2.4 Hardware

It is allowed to increase the number of movement-limiting devices such as locks, bolts and hinges but it is not allowed to be reduced.

Where self-closing characteristics are not required, it is allowed to remove closing device.

### 4.3.3 Permissible Size Variations

#### 4.3.3.1 General

Doors with dimensions which are different from those of the test specimens shall be permitted within some extent, but variations depend on the type of product and on the time during which the fire resistance criteria are met.

The increase and decrease of dimensions permitted by the field of direct application are applicable to the overall size of each leaf, each side panel, each transom panel and each over panel independently and including ant rebates which may be present on the leaf or panel.

The limits of permitted size variation are given in Annex B of the standard EN 1634-1:2014.

#### 4.3.3.2 Dimension variations according to the type of product

##### 4.3.3.2.1 Permissible dimension variations of the leaf

The amount of variation of size permitted is dependent on whether the classification time was just reached (category 'A') or whether an extended time (category 'B' overrun) in accordance with the following values was fulfilled before the test was concluded.

Classification time	All performance criteria fulfilled for at least
15 minutes	18 minutes
20 minutes	24 minutes
30 minutes	36 minutes
45 minutes	52 minutes
60 minutes	68 minutes
90 minutes	100 minutes
120 minutes	132 minutes

Consequently, increase of the dimension is only valid in case of related performance about "Category B overrun" is achieved in Clause 8, Table 2.

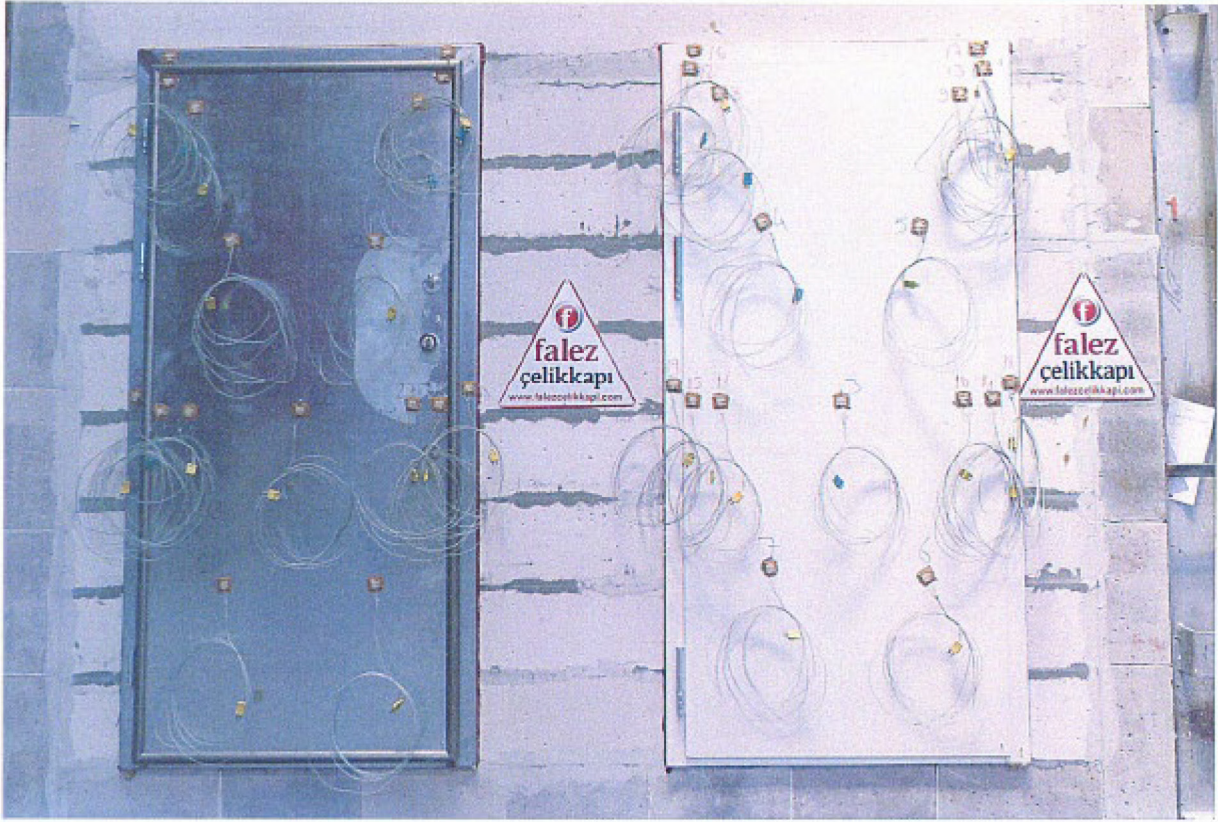


Photo C1: Unexposed side of the test specimens before the test.

Bu rapor, laboratuvarın yazılı izni olmadan kısmen kopyalanıp çoğaltılamaz.

İmzasız ve mühürsüz raporlar geçersizdir.

*This report shall not be reproduced other than in full except with the permission of the laboratory. Testing reports without signature and seal are not valid*

Phone: +902626581662

Fax.: +902626581669

E-mail: [turkey@effectis.com](mailto:turkey@effectis.com)

Web: [www.effectis.com](http://www.effectis.com)

FR1106/REV00/02.04.2012

C-1/3

*Effectis*





Photo C2: Exposed side of the test specimens before the test.

Bu rapor, laboratuvarın yazılı izni olmadan kısmen kopyalanıp çoğaltılamaz.

İmzasız ve mühürsüz raporlar geçersizdir.

*This report shall not be reproduced other than in full except with the permission of the laboratory. Testing reports without signature and seal are not valid*



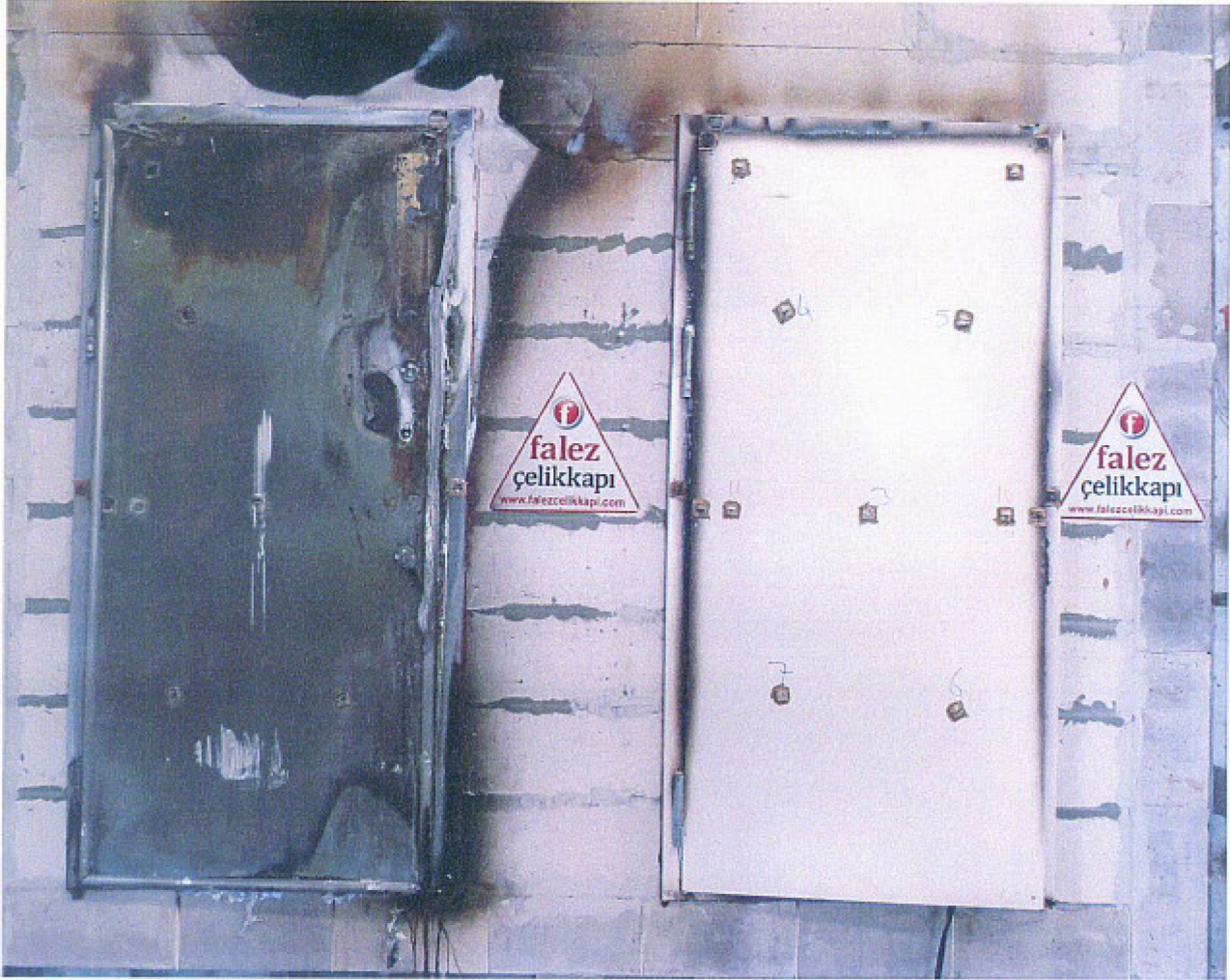


Photo C3: Unexposed side of the test specimens after the test.

Bu rapor, laboratuvarın yazılı izni olmadan kısmen kopyalanıp çoğaltılamaz.

İmzasız ve mühürlü raporlar geçersizdir.

*This report shall not be reproduced other than in full except with the permission of the laboratory. Testing reports without signature and seal are not valid*

Phone: +902626581662

Fax.: +902626581669

E-mail: [turkey@effectis.com](mailto:turkey@effectis.com)

Web: [www.effectis.com](http://www.effectis.com)

FR1106/REV00/02.04.2012

C-3/3

*Effectis*



STANDARDS ORGANISATION OF NIGERIA  
...improving life through standards

WJ24K3



**Standards Organisation of Nigeria Conformity Assessment Programme  
Product Certificate (Registered)**

<b>This document is not and does not substitute in any respect the SONCAP Certificate required for Customs Declaration</b>		<b>PC(R) No.:</b> R-1605/01845/2 <b>Issuance Date:</b> 31.05.2016 <b>Expiry Date of Certificate:</b> 27.05.2017 <b>Page:</b> 1 / 2 <b>Version:</b> 2		
<b>Beneficiary:</b> BAKIRCILAR CELIK KAP ALM. MOB. TIC. <b>Address:</b> TIC. VE SAN. LTD. STI. ORGANIZE SANAYI YOLU BOLGESI DOSEMEALTI ODABASI KOYU  <b>Phone No.:</b> Antalya - Turkey 902424248327 <b>E-mail :</b> info@falezcelikkapi.com <b>Fax No.:</b> 902424248329				
<b>Importer's Details</b>		<b>TIN No:</b>		
		<b>RC/BN No:</b>		
<b>Item No.</b>	<b>HS Code</b>	<b>Product Description</b>	<b>Country of Origin</b>	<b>Standard Reference</b>
1	730830	V-12 GALVANIZED AND NON-GALVANIZED IRON & STEEL PRODUCTS INCL STAINLESS STEEL PRODUCTS, FALEZ CELIK KAPI, STEEL LAMINATED, ENTRANCE DOORS AND WOODEN SURFACE STEEL DOORS AND GLASS TOPPED STEEL DOORS	Turkey	EN 1627:1999
2	730830	V-12 GALVANIZED AND NON-GALVANIZED IRON & STEEL PRODUCTS INCL STAINLESS STEEL PRODUCTS, GRAND DOOR, STEEL LAMINATED, ENTRANCE DOORS AND WOODEN SURFACE STEEL DOORS AND GLASS TOPPED STEEL DOORS	Turkey	EN 1627:1999
<b>Remarks:</b> PRODUCTS ARE SUPPORTED WITH NON SGS TEST REPORT AND ISO 9001 CERTIFICATE.				

*Signature*







## FRAME CONSTRUCTION STAGES







**Galvanized steel**



**Sizing**



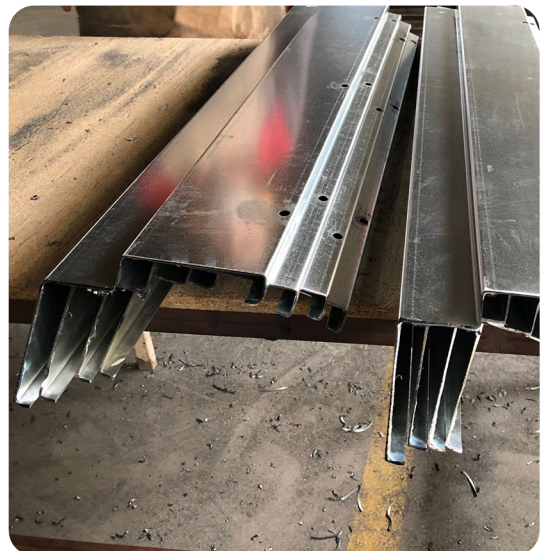
**Durma CNC Punch**



**Durma CNC Press**



**The Joints Of The Cases Are  
Cut At 45 Degrees**



**Ready to Weld Parts**





**45 Degree Argon Welding**



**45 Degree Argon Welding**



**45 Degree Argon Welding**



**Ready To Paint Casing**



**Powder Coating Application**



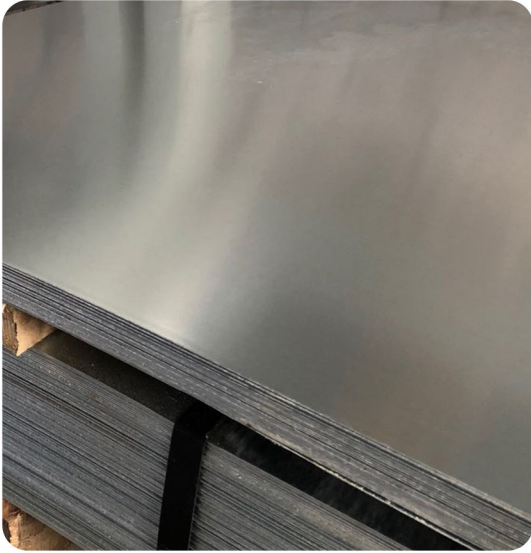
**Painted Deady Parts**



**LEAF CONSTRUCTION STAGES**







**Galvanized steel**



**Sizing**



**Durma CNC Press**



**Durma CNC Punch**



**Ready To Lag Surface**



**Paint Oven**





## LEAF SECTION







- 1 Leaf Board**
  - Front Surface 1 mm
  - Rear Surface 0,80 mm
- 2 Panic Bar**
- 3 Smoke Gasket**
- 4 Roller Hinge**
- 5 Adjustable Spring Hinge**
- 6 Fire Resistant 12mm/128 kg Red Plaster**
- 7 Seramik Fiber 50mm/128 m³ (IE290)**
- 8 Case Fixing Holes**
- 9 Case Sheet Thickness 1,5mm)**
- 10 Cold Gasket**

## FALEZ STEEL DOOR USE AND MAINTENANCE MANUAL, WARRANTY

This user manual contains the basic and introductory information about your door and the rules you need to observe during the operation of your door, during the maintenance of your door and how to avoid errors in use and the scope of the warranty.

From the point of view of production processes, we are distinguished from other players in our domain since we use high quality stainless steel bended into a monolithic structure from a single galvanized sheet and finish the fields of the door with aluminium profiles that hide the possible scratches, impurities and screw places, also increasing durability and corrosion resistance.

As we do not employ any welding and hide the screws the risk of corrosion is minimalized. In addition, a natural and quality appearance in terms of aesthetics is obtained. This original Falez Çelikkapı production technique has become a trademark to be found everywhere in Turkey with more than 200 channel dealers. In addition, with more than 30 sales channels in foreign countries, we continue to spreaden our knowhow internationally.

Falez Çelikkapı is applying ISO 2001, 9001 and 10002 quality standards in the management of the factory and its production. All of our products have a TSE Certificate and are guaranteed for 1 year against any production faults.

With Falez Celikkapı you can not have a door and at the same time have security weakness.

### WARRANTY CONDITIONS

- 1) The warranty of our product starts immediately after delivery of the product; Your product will be under the great Falez Çelikkapı warranty for 2 years. Falez Steel door is fully and completely insured together with all its elements including frames and accessories.
- 2) In case your door fails during warranty period, the time passed at repair will be added to the warranty period. The maximum repair period for your door is 30 working days. The period will start after the delivery to the service station, and in case there is none any one of the product seller, dealer, agent, representation, importer or producer.
- 3) During the warranty period of your door, in case there is a failure due to either material and manpower or installation errors, labor costs, changed component or under any other name no charges will be required and the repair will be done.
- 4) Of your door:

Provided within the warranty period, if the same failure occurs more than twice within a year or if there are more than 4 failures and the product cannot be made use of, if the repair time has expired and if there is no service station, in turns, the seller, dealer, representer or importer or producer will prepare a report indicating that the repair is not possible and in this case the changement operation will be done without charges.
- 5) The failures that arise due to violation of the points indicated in this usage and maintenance guide and failures due to direct contact with natural conditions (rain, humidity and sun etc), failures resulting from robbery and force usage are outside the scope of our warranty. In addition using our doors in the opposition of their classification for internal environment and external environment usage is also outside the scope of the warranty.

## USAGE CONDITIONS AND INSTRUCTIONS

- 1) Collect your door by controlling it after that your installation staff has mounted your door. Your signature on the delivery sheet indicates that you have collected your door without damage and complete.
- 2) The paint, plaster, foam etc. that stick to your door during installation need to be wiped away without drying and scratching.
- 3) Each time you get out of the position or location that you are in you need to close your door completely. Do not leave your door open by putting mops and slippers. Choosing such a behaviour path will cause your door to bang and to make a separation between the case and the wing. This in turn will provide a background for the locks and handles to not fit anymore.
- 4) If there is a wooden section in your door do not expose it to external factors (i.e. rain, humidity and sun). This will cause color changes and eruptive happenings in the wood of your door.
- 5) Certainly do not apply grease to your door barrels and lock pins.  
This kind of materials result in gathering dust in the lock mechanism and will damage your lock with the accumulation of dust.
- 6) Certainly do not apply grease, machine oil etc material to the hinges.
- 7) Sometimes in the internal handle there may be stiffening with time. This will make harder the closing of your door. In this case you can apply vaseline to the tongue of your handle to achieve healthy operation of your handle.
- 8) Do not use force on your internal handle. This will prevent healthy operation of your handle.

## USAGE CONDITIONS AND INSTRUCTIONS

- 1) Collect your door by controlling it after that your installation staff has mounted your door. Your signature on the delivery sheet indicates that you have collected your door without damage and complete.
- 2) The paint, plaster, foam etc. that stick to your door during installation need to be wiped away without drying and scratching.
- 3) Each time you get out of the position or location that you are in you need to close your door completely. Do not leave your door open by putting mops and slippers. Choosing such a behaviour path will cause your door to bang and to make a separation between the case and the wing. This in turn will provide a background for the locks and handles to not fit anymore.
- 4) If there is a wooden section in your door do not expose it to external factors (i.e. rain, humidity and sun). This will cause color changes and eruptive happenings in the wood of your door.
- 5) Certainly do not apply grease to your door barrels and lock pins.  
This kind of materials result in gathering dust in the lock mechanism and will damage your lock with the accumulation of dust.
- 6) Certainly do not apply grease, machine oil etc material to the hinges.
- 7) Sometimes in the internal handle there may be stiffening with time. This will make harder the closing of your door. In this case you can apply vaseline to the tongue of your handle to achieve healthy operation of your handle.
- 8) Do not use force on your internal handle. This will prevent healthy operation of your handle.





**falez**elikkapı



Organize Sanayi Bölgesi Kepez Odabaşı Köyü Antalya/Türkiye

info@falezcelikkapi.com

satis@falezcelikkapi.com

+90 (242) 424 83 27 (pbx)

+90 (242) 424 83 29

[www.falezcelikkapi.com](http://www.falezcelikkapi.com)

